

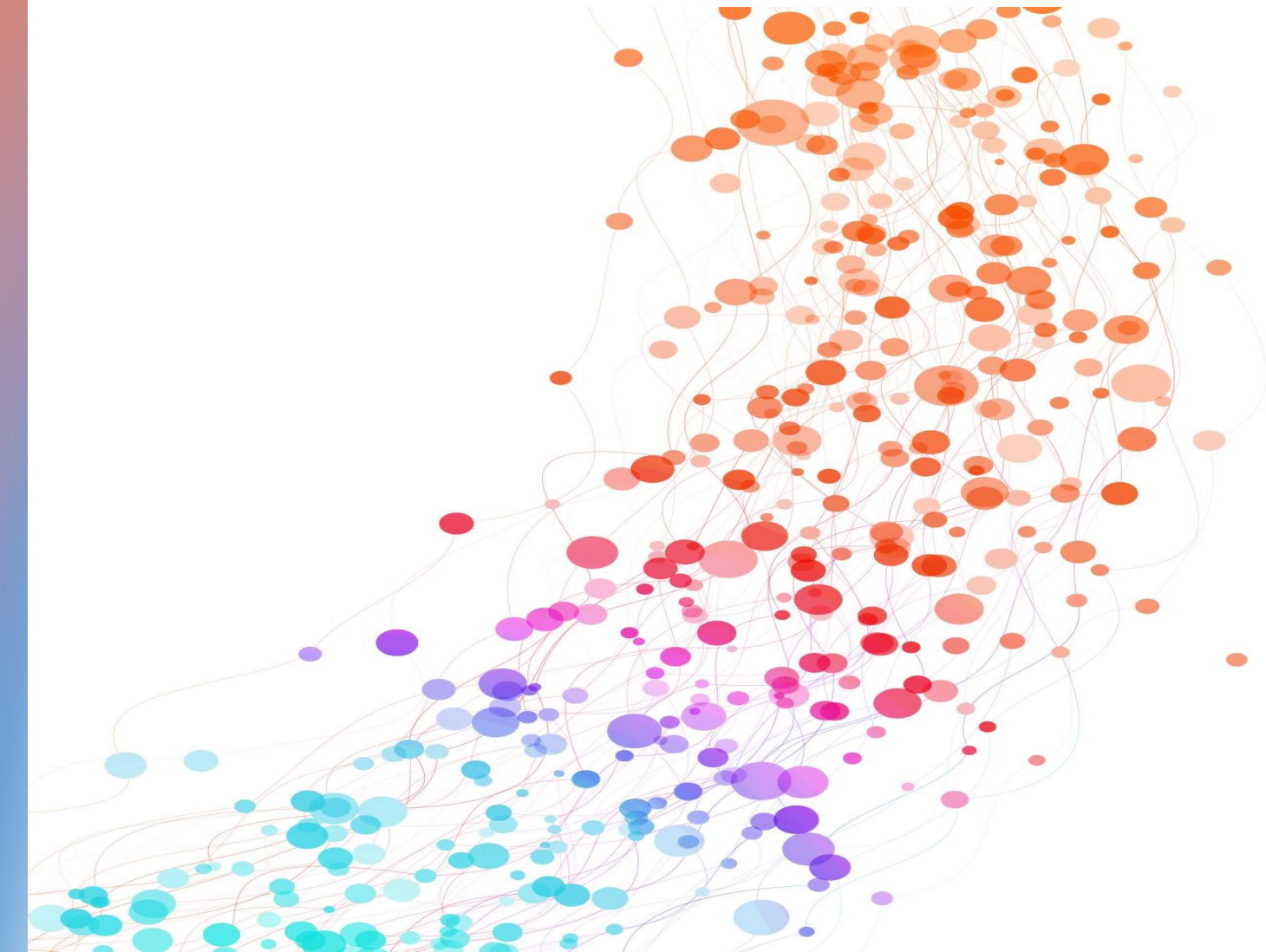
# External Evaluation Services for European Projects



External evaluation and supervision is becoming increasingly important in today's EU-funded projects.

Our team of experienced professionals has a demonstrated track record of guiding projects to success.

Let's talk about it!



# Why engage an External Evaluator?



We know from our own experience that it is demanding to guide EU-funded projects to success and offer you:

## **Guidance & Feedback on QA issues**

A well-planned quality assurance process is critical to success. We will accompany you, advise you on project management, and define the QA process together with you.

Save your internal resources for key tasks!

## **Evaluation of processes and products**

We assist you in the project's completion by keeping the quality of your processes and products in mind.

We provide you with professional evaluation tools and you focus on core tasks.

## **A Balanced Perspective from "outside"**

A balanced perspective from specialists with extensive expertise allows you to stay focused on your aims.

If a project becomes difficult, we can assist you in resolving the challenges and get back on track.

# Let us arrange our collaboration!



## Description of Needs

Describe your needs as to how we can best support you in terms of QA.

Let us know your expectations.

## Creation of our Offer

We will analyse your request and make a recommendation based on your needs and the scope of your project.

We include the CV of our chosen expert(s).

## Finetuning and Launch

Then we will clearly define our aims, tasks and roles in order to get off to a good start.

We look forward to providing you with excellent service.

# Domain of Expertise

## 1 Diverse Target Groups

Our QA experts have dealt with diverse target groups including youth, adult learners, educators, social workers, refugees, the LGBTQ+ community, experts in women rights and many more partners in various sectors.

## 2 Broad range of Deliverables

We are professionals in establishing a competent Projekt Management system, including QA-Tools. As a result, we are prepared to analyse a large portfolio of deliverables, outcomes, and products from numerous fields and sectors.



# Meet Our Experts



## Virág Suhajda (Ph.D)

Virág Suhajda, Ph.D. in Communication and Linguistics, has a background in International Relations, Political Science, and IT Management. Virág combines verbal brilliance with multidisciplinary expertise.

Her background includes environmentalism, youth programs, and a variety of writings on current themes. She formerly worked as an Erasmus+ evaluator for Hungary's National Agency. She is well-known both locally and globally for her skills in project evaluation.

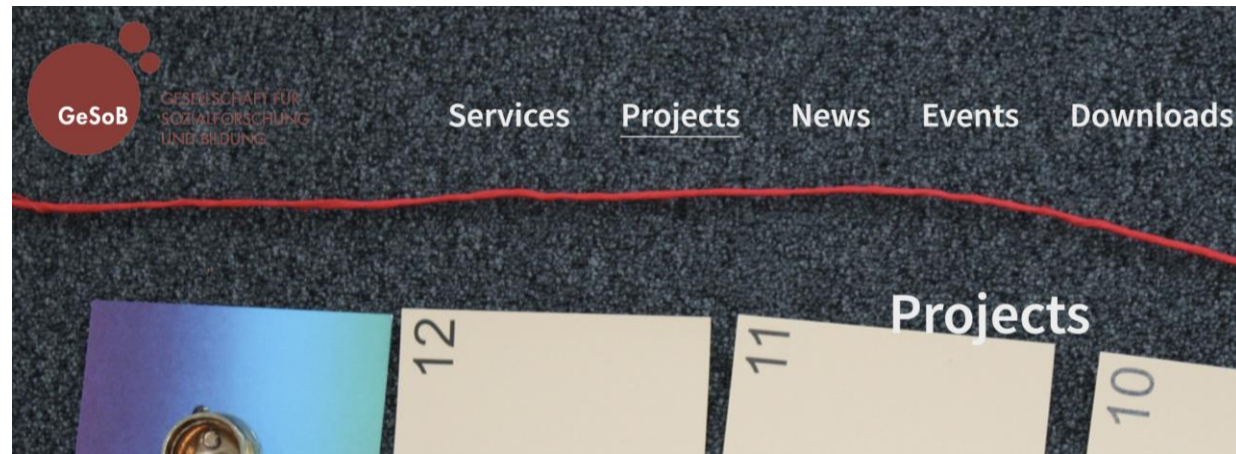
## Paul Schober (Ph.D)

Paul Schober, Ph.D. in economics with experience in academic management, symbol coaching, nonprofit healthcare PR and accounting, brings a rich skill set. Paul is Managing Director at Hafelekar with prior lecturing roles at esteemed institutions and a portfolio of publications covering education, migration, apprenticeship, entrepreneurship, change management, and innovation. Paul is a globally acknowledged expert in Quality Management, and Quality Assurance, acting in various projects from different sectors.

## Karin Lackner (M.A.)

Karin Lackner, with an M.A. in Cultural Studies from the University of Vienna, has held leadership positions at VA TECH, overseeing organizational aspects in the 'IT & Organisation' division. Her career spans EU project management, human resource development, and quality management at the National Agency in Austria. Karin is a project manager at Hafelekar, where she coordinates EU projects, providing expert project management and consulting to both public and private sector clients.

# Rich in Experience & Expertise



[www.gesob.at](http://www.gesob.at)

Let's get in touch

[info@gesob.at](mailto:info@gesob.at)

## 1 Experience

Over 100 successfully executed EU-projects, coordinating more than a quarter of them.

## 2 Expertise

Engaged in 50+ projects in either internal or external evaluation capacities.